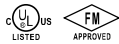


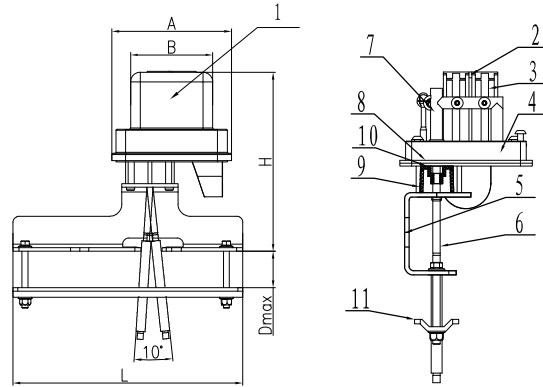
Supervisory Switch for OS&Y Gate Valve (MXHQ)



MXHQ



- Service Environment: Indoor or Outdoor use, all parts have corrosion resistant finishes
- Temperature Range: 0°C - 80°C
- Cover Tamper: Tamper Resistant Screws
Optional Cover Tamper Switch Available
- Electrical Ratings: 15 Amps at 125/250VAC
- Appliance Standards: NFPA-13, NFPA-13D, NFPA-13R, NFPA-72
- Statement: The Model MXHQ Supervisory Switch is used to monitor the open or close status of an OS&Y (outside screw and yoke) type gate valve. There are two sizes, the model MXHQ D50 serves the OS&Y Gate valves ranging in size from 2"-16"(50mm - 400mm), the other model MXHQ D450 is fit for the OS&Y Gate valves ranging in size from 18"-24"(450mm - 600mm).



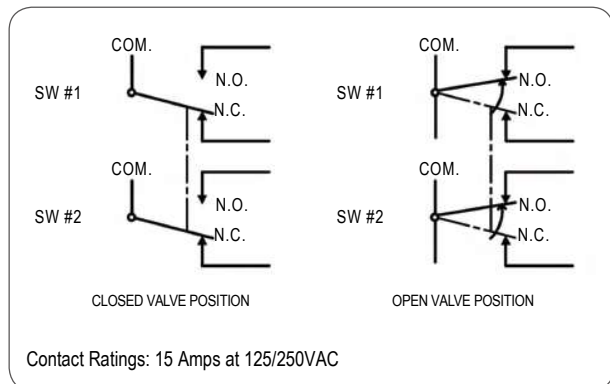
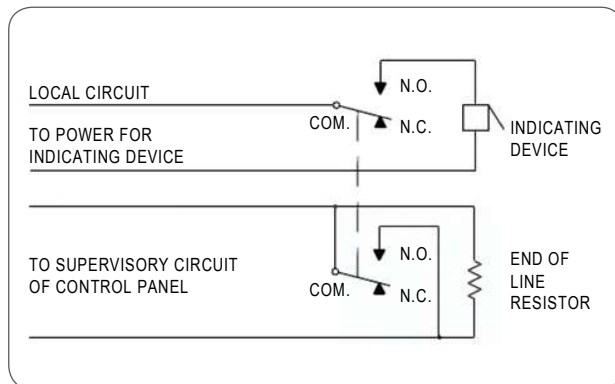
MATERIAL SPECIFICATION

Part No.	Part	Standard Specification	Options
1	Outer Shell	ADC12	
2	Brace	Carbon Steel Q235	AISI 304, AISI 316
3	Micro Switch		
4	Base	ADC12	
5	Connection Plate	Carbon Steel Q235	AISI 304, AISI 316
6	Driving Lever	AISI 304	AISI 316
7	Axis	Nylon	
8	Sealing Gasket	CR Foam Cotton	
9	Pressing Sleeve	PTFE	
10	Rubber Ring	EPDM	
11	Clamp Plate	Carbon Steel Q235	

Note: For special material request other than standard specification, please indicate clearly on the inquiry or order list.

DN		Dimensions(mm)				
Inch	mm	A	B	H	L	Dmax
2"-16"	50-400	99	68	148	200	105
18"-24"	450-600	99	68	148	360	135

TYPICAL ELECTRICAL CONNECTIONS



CERTIFICATE OF COMPLIANCE

Certificate Number 20180612-S35941
Report Reference S35941-20180606
Issue Date 2018-JUNE-12

Issued to: JINAN MEIDE CASTING CO LTD
Meide Science and Technology Park
Pingyin Industrial Park
JINAN
SHANDONG 250400 CHINA

**This is to certify that
representative samples of**

EXTINGUISHING SYSTEM ATTACHMENTS

Waterflow Indicators (paddle-type) model
ZSJZYS
Supervisory switches, Models ZXHQ and MXHQ

Have been investigated by UL in accordance with the
Standard(s) indicated on this Certificate.

Standard(s) for Safety:

UL 346 : Standard for Safety for Waterflow Indicators for
Fire Protective Signaling Systems
CAN/ULC-S548 : DEVICES AND ACCESSORIES FOR
WATER TYPE EXTINGUISHING SYSTEMS

Additional Information:

See the UL Online Certifications Directory at
www.ul.com/database for additional information

Only those products bearing the UL Certification Mark should be considered as being covered by UL's
Certification and Follow-Up Service.

Look for the UL Certification Mark on the product.

This is to certify that representative samples of the product as specified on this certificate were tested
according to the current UL requirements.



Bruce Mahrenholz, Director North American Certification Program
UL LLC

Any information and documentation involving UL Mark services are provided on behalf of UL LLC (UL) or any authorized licensee of UL. For questions, please
contact a local UL Customer Service Representative at <http://ul.com/aboutul/locations/>





Certificate of Compliance

FIRE PROTECTION EQUIPMENT

This certificate is issued for the following equipment:

System Description – **MXHQ, ZXHQ Supervisory Switches and YLKG Pressure Switches**

Approval Guide Listing: Category: See Page 2

Jinan Meide Casting Co Ltd
Meide Science and Technology Park
Pingyin Industrial Park
Jinan Shandong Province 250400
China

This certifies that the equipment described has been found to comply with the applicable requirements, as stated in the Approval Report(s), of the following FM Approval Standards and other documents:

<i>Approval Standards</i>	<i>Other Standards</i>	<i>Date</i>	<i>Organization, Designation</i>	<i>Date</i>
<i>Class Number</i>				
3135		December 2017		
3132		August 2018		

Original Approval Job Identification: PR449521

Approval Granted:

Related Report:

Subsequent Revisions:

To verify the availability of the Approved product, please refer to www.approvalguide.com


J.E. Marquedant
VP, Manager of Electrical Systems
FM Approvals
1151 Boston-Providence Turnpike,
Norwood MA, 02062 USA

Date 19 April 2019



Member of the FM Global Group



Certificate of Compliance

Electrical Signaling  Supervisory Signal Initiating Devices  Sprinkler System Supervision – Standard Security

MXHQ & ZXHQ Series Supervisory Switches

Model	Size	Description
MXHQ	D50(2"),D450(18")	Supervisory Switch for YS&Y Gate Valve
ZXHQ	1/2"	Supervisory Switch for Indicator Post

Rated IP65

Electrical Signaling  Alarm Signal Initiating Devices  Sprinkler Waterflow, Pressure-Actuated

YLKG Series Waterflow Pressure Switches

Model	Size	Description
YLKG-10	1/2"	Pressure Switch 0 - 20 PSI
YLKG-40	1/2"	Pressure Switch 10- 60 PSI
YLKG-120	1/2"	Pressure Switch 20- 120 PSI

Rated IP65

